



LWA REACH COALITION

Live Well Allegheny Racial and Ethnic Approaches to Community Health Coalition

- In 2023, the Allegheny County Health Department (ACHD) was awarded for the second time the Racial and Ethnic Approaches to Community Health (REACH) Grant from the CDC.
- This coalition is working to achieve health equity by addressing risk factors associated with chronic disease in African American/Black populations.
- This coalition will prioritize residents living in nine selected communities where 20% of the population is living below the federal poverty level (Table 1).
- This funding allows the LWA REACH coalition to address health disparities and chronic disease risk factors by bringing together community-based organizations.
- LWA REACH partners are implementing a collective work plan that is assessed by an evaluation team led by **ACHD** and the **UrbanKind Institute**.

Figure 1: Map of Priority Communities

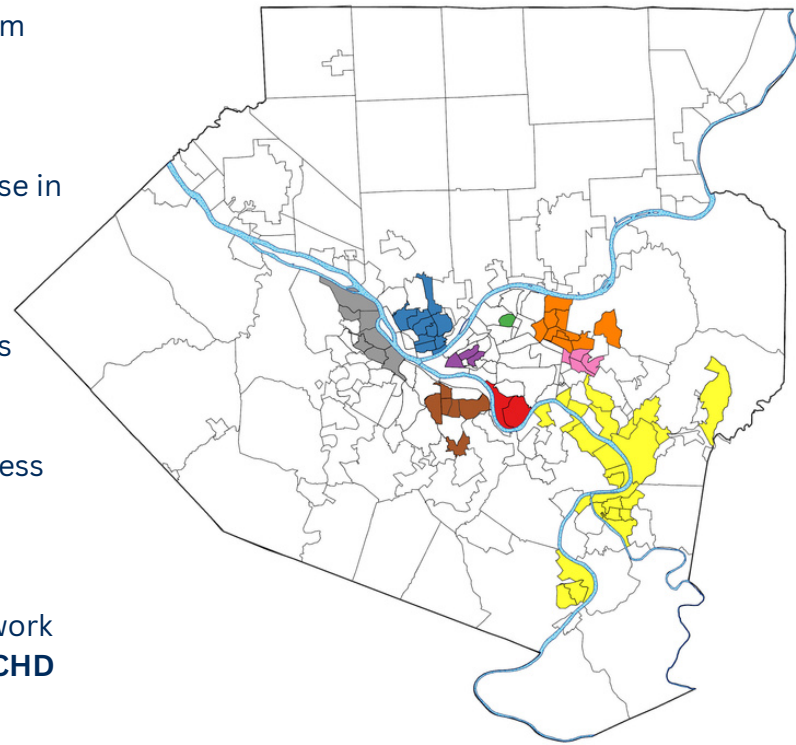


Table 1: Characteristics of the Priority Communities

Region*	Communities	Total Black Population (%)†	Black Population Below Poverty (%)†
North Side	Fineview, Northview Heights, Perry South, Spring Hill-City View, Marshall-Shadeland, Allegheny Center, Allegheny West, East Allegheny, Northshore, Central Northside	8907 (39%)	4008 (45%)
Hill District	Crawford Roberts, Middle Hill, Bedford Dwellings, Terrace Village	5571 (75%)	2262 (41%)
Garfield	Garfield	1616 (61%)	584 (36%)
Larimer-Homewood-East Hills	Lincoln-Lemington-Belmar, Larimer, East Hills, Homewood North, Homewood South, Penn Hills	14979 (79%)	5968 (40%)
Wilkinsburg	Wilkinsburg	5131 (62%)	1802 (35%)
Mon Valley	Homestead, Whitaker, Duquesne, West Mifflin, Clairton, North Versailles, Wilmerding, Turtle Creek, East Pittsburgh, North Braddock, Braddock, Rankin, Swissvale, Braddock Hills, McKeesport, Monroeville	25156 (42%)	8961 (36%)
West End	Sheraden, Crafton Heights, Stowe Twp., McKees Rocks, Esplen, Elliot	6026 (31%)	2321 (39%)
Hazelwood	Hazelwood and Glen Hazel	1516 (38%)	811 (53%)
South Side	Arlington, Allentown, Carrick, Knoxville, Mount Oliver, Beltzhoover, Bon Air	7055 (36%)	2787 (40%)

Strategies & Community Partners

1. Nutrition: *Collaborate with community partners, Greater Pittsburgh Community Food Bank, Just Harvest, Pittsburgh Food Policy Council, The Food Trust, and UPMC Children’s Hospital of Pittsburgh to improve access to healthier foods among the priority population by implementing local-level policies and activities.*

2. Physical Activity: *Collaborate with Allegheny County Economic Development by implementing policies, plans, or community design changes that increase access to physical activity in our priority communities.*

3. Breastfeeding: *Collaborate with community partners, Black Women’s Policy Center, Healthy Start, and Pittsburgh Black Breastfeeding Circle to increase access to programs that provide continuity of care by implementing policies and activities.*

4. Adult Vaccinations: *Collaborate with community partners, ACHD Immunization Clinic, Bethany Community Ministries, Black Equity Coalition, Faith-Based Health Collaborative, Hilltop Pharmacy, and Livingston Pharmacy to increase awareness, confidence, demand, and access for flu, COVID-19, and other routinely recommended adult vaccinations.*



For More Information

Learn more about the LWA REACH Coalition to be a part of this journey! www.livewellallegheny.com/REACH/